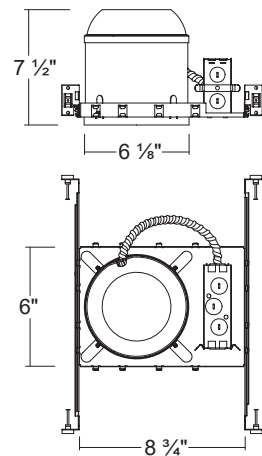


LED600ICA / LED600ICA-01V

6" IC Air-Tight LED Dedicated New construction Housing



Dimensions



SPECIFICATION

Plaster Frame

- Galvanized steel construction. The housing can be removed from plaster frame to provide access to the junction box

Junction Box

- Listed for through branch circuit wiring
- Contains seven 7/8" knockouts and four Romex pryouts with strain relief

Bar Hanger

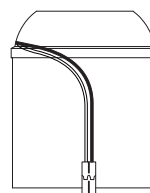
- Pre-installed Real nail easily installs in regular lumber, engineered lumber
- Bar Hangers are adjustable from 13-5/8" to 25" and can be repositioned 90 degree on plaster frame

Listings

- cULus Listed for Damp Location
- cULus Listed for Feed Through
- Certified under ASTM-E283 for Air tight construction

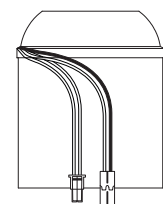
CONNECTOR

LED600ICA
Triac Dimming Ver.



Ideal connector

LED600ICA-01V
0-10V Dimming Ver.



Molex connector Ideal connector

ORDERING INFORMATION

Model No.	Dimming	Description
LED600ICA	Triac Dimming	6" IC Air-Tight Dedicated New construction Housing
LED600ICA-01V	0-10V Dimming	6" IC Air-Tight Dedicated New construction Housing

COMPATIBLE TRIMS

LED600ICA
Model NO.

LRKT56X Series
LRKT64X Series
LRKT56X-3CCT Series
LRKT64X-3CCT Series
LRKT56X-5CCT Series
LRKT64X-5CCT Series

Description

5&6 inch LED All Retrofit kit Series
6 inch LED Square Retrofit kit Series
5&6 inch Selectable 3 CCT LED All Retrofit kit Series
6 inch Selectable 3 CCT LED Square Retrofit kit Series
5&6 inch Selectable 5 CCT LED All Retrofit kit Series
6 inch Selectable 5 CCT LED Square Retrofit kit Series

LED600ICA-01V
Model NO.

LRKT56X-5CCT-M Series
LRKT64X-5CCT-M Series

Description

5&6 inch Selectable 5 CCT LED All Retrofit kit Series
6 inch Selectable 5 CCT LED Square Retrofit kit Series